

30 March 2020

At the conclusion of the Corporate, Finance, Properties
and Tenders Committee



Environment Committee

Agenda

- 1. Disclosures of Interest**
- 2. Project Scope - Ernest Pedersen Reserve, Glebe**

Disclaimer, Terms and Guidelines for Speakers at Council Committees

As part of our democratic process, the City invites members of the community to speak directly to Councillors during Committee meetings about items on the agenda.

Webcast

In accordance with the *City of Sydney Code of Meeting Practice*, Committee meetings are audio visually recorded and webcast live on the City of Sydney website at www.cityofsydney.nsw.gov.au.

Members of the public attending a council or committee meeting may have their image, voice and personal information (including name and address) recorded, publicly broadcast and archived for up to 12 months.

Consent

By attending a council or committee meeting, members of the public consent to this use of their image, voice and personal information.

Disclaimer

Statements made by individuals at a council or committee meeting, and which may be contained in a live stream or recording of the meeting are those of the individuals making them, and not of the City. To be clear, unless set out in a resolution of council, the City does not endorse or support such statements.

The City does not accept any liability for statements made or actions taken by individuals during a Council or Committee meeting that may be contrary to law, including discriminatory, defamatory or offensive comments. Such statements or actions are not protected by privilege and may be the subject of legal proceedings and potential liability, for which the City takes no responsibility.

Guidelines

To enable the Committee to hear a wide range of views and concerns within the limited time available, we encourage people interested in speaking at Committee to:

1. Register to speak by calling Secretariat on 9265 9310 or emailing secretariat@cityofsydney.nsw.gov.au before 12.00 noon on the day of the meeting.
2. Check the recommendation in the Committee report before speaking, as it may address your concerns so that you just need to indicate your support for the recommendation.
3. Note that there is a three minute time limit for each speaker (with a warning bell at two minutes) and prepare your presentation to cover your major points within that time.
4. Avoid repeating what previous speakers have said and focus on issues and information that the Committee may not already know.
5. If there is a large number of people interested in the same item as you, try to nominate three representatives to speak on your behalf and to indicate how many people they are representing.

Committee meetings can continue until very late, particularly when there is a long agenda and a large number of speakers. This impacts on speakers who have to wait until very late, as well as City staff and Councillors who are required to remain focused and alert until very late. At the start of each Committee meeting, the Committee Chair may reorder agenda items so that those items with speakers can be dealt with first.

Committee reports are available at www.cityofsydney.nsw.gov.au with printed copies available at Sydney Town Hall immediately prior to the meeting. City staff are also available prior to the meeting to assist.

Item 1.**Disclosures of Interest**

Pursuant to the provisions of the City of Sydney Code of Meeting Practice and the City of Sydney Code of Conduct, Councillors are required to disclose pecuniary interests in any matter on the agenda for this meeting.

Councillors are also required to disclose any non-pecuniary interests in any matter on the agenda for this meeting.

This will include receipt of reportable political donations over the previous four years.

In both cases, the nature of the interest must be disclosed.

Written disclosures of interest received by the Chief Executive Officer in relation to items for consideration at this meeting will be laid on the table.

Item 2.

Project Scope - Ernest Pedersen Reserve, Glebe

File No: X019475

Summary

This report outlines the proposed scope of works for the upgrade of Ernest Pedersen Reserve located on the corner of Ferry Road and Avon Avenue, Glebe. Ernest Pedersen Reserve has been identified as part of the small parks and playgrounds improvement program.

The project brief is to refurbish the reserve, including the playground area, replace end of life equipment and soft-fall as required, increase the range of play experiences for children of different ages and abilities, improve the range of seating and enhance the opportunity for the provision of habitat.

Draft concept plans were presented to the community between 17 May 2019 and 14 June 2019 and exhibited on the City's website. In response to community feedback, significant amendments were made to the draft concept plan to interpret the historic garden layout associated with the adjacent state heritage listed 'Rothwell Lodge'. A second round of community consultation was held between 28 January and 25 February 2020 which exhibited a Revised Concept Plan. This Revised Concept Plan was also exhibited on the City's website.

Community feedback on the Revised Concept Plan was strongly in support of the amendments. Generally respondents indicated that the Revised Concept Plan better reflected the unique character of the reserve and balanced the need for play provision with more passive recreation activities. Respondents were also very supportive of the proposed interpretation of the historic garden layout and of the revised materials for the play equipment and soft-fall.

The key principles of the proposal are to protect and enhance the existing landscape character, including its heritage and habitat, to enhance opportunities for passive recreation, and to renew the playground to provide a local scale play space which improves play opportunities for local children. In addition, the proposal will provide improved access, increased seating opportunities that encourage social interaction, and use simple, robust, high quality materials which reflect the local neighbourhood character.

Recommendation

It is resolved that Council:

- (A) endorse the scope of work for improvements to Ernest Pedersen Reserve, Glebe, as described in the subject report and shown in the Revised Concept Plan as Attachment B to the subject report, for progression to relevant approvals, preparation of construction documentation, tender and construction;
- (B) note that feedback from the community will be further investigated and incorporated into the improvements to Ernest Pedersen Reserve, Glebe during the detailed design phase; where possible; and
- (C) note the estimated project forecast as outlined in Confidential Attachment F to the subject report.

Attachments

- Attachment A.** Location Plan and Site Photos
- Attachment B.** Revised Concept Plan
- Attachment C.** Engagement Report
- Attachment D.** Historic Plan and Garden Image
- Attachment E.** Draft Concept Plan
- Attachment F.** Financial Implications (Confidential)

Background

1. The City has an ongoing small parks and playgrounds improvement program for parks that are in need of upgrade or enhancement works, replacement of end of life equipment, and to provide appropriate facilities for local residents.
2. Ernest Pedersen Reserve is located at the high point of a series of reserves which provide a meandering pedestrian link to the Glebe Light Rail stop. These parks are made up of Sarah Peninton Reserve, Palmerston Steps and William Carlton Gardens, as well as Ernest Pedersen Reserve.
3. Ernest Pedersen Reserve was identified for an upgrade due to the reserves overall condition, including non-compliant equipment, no equal access to the play equipment, limited range of play experiences and an opportunity to build upon the work undertaken by the City and the Ferry Road Bush Care Group in improving the provision of habitat planting in the reserve. Refer to Attachment A for the site location plan and photos of the existing reserve condition.
4. The reserve contributes to a functional corridor of 'stepping stone' open space habitats extending from the Glebe Foreshore Walk East to Orphan School Creek. It has a distinctive landscape character. It has mature Eucalyptus trees, a mix of native and exotic understorey planting, and views over the adjacent reserves and down to Blackwattle Bay. It is contained by low formal sandstone walls and stairs.
5. Ernest Pedersen Reserve is located within the Glebe Heritage Conservation Area in the Sydney Local Environmental Plan 2012. It is adjacent to Rothwell Lodge, which is listed on the local and State Heritage register. The reserve was formerly the front garden of Rothwell Lodge and is therefore considered as important to the Rothwell Lodge, however, the reserve itself is not listed.
6. The land was purchased by the City in two stages between 1949 and 1953. Funds were provided by the Kirsova Children's Playground Endowment Committee to construct 'Kirsova Playground No 4' at the site.
7. There is a strong and active community in the Glebe area. The Ferry Road Bush Care group take an active role in the care of the reserve. The reserve is currently used by a variety of community members for rest and relaxation, and it provides a space for youth to gather and socialise on their way to and from the light rail. It has been identified that there is some anti-social behaviour in the reserve which is a result of the connection and proximity to the high street and public transport route. Whilst it has been noted that the current use of the reserve by families is inconsistent and low, it is understood that this is in part a result of the condition of the play offering, rather than a reflection of community needs.
8. The existing play equipment includes a single swing and a four-person rocker. These are located in a raised mulched bed edged by treated timber. There is a limited variety of play experiences, with a clear absence of more active elements such as climbing / balance and imaginative / sensory play particularly for younger children. The landscape setting provides opportunity for informal play and the provision of a turf area allows for free play.
9. A brick-lined bitumen path was established after the council took ownership. To the rear of the reserve, a cyclone mesh fence is located on top of the sandstone wall which separates Ernest Pedersen Reserve from William Carlton Gardens. There are four seats, two lights and an electrical box.

10. The existing planting includes:
 - (a) A mix of exotic and native shrubs and groundcovers;
 - (b) twelve trees in total with the majority being native species; and
 - (c) one Peppercorn tree which reflects planting associated with the State Heritage Registered Rothwell Lodge.

Draft Concept Plan

11. A draft concept plan was developed for the proposed works and community consultation undertaken (refer to Attachment E) between 17 May 2019 and 14 June 2019. This draft scheme included the following works:
 - (a) retention and protection of existing trees and habitat planting throughout the reserve;
 - (b) new opportunities for habitat planting;
 - (c) a renewed play space - providing a variety of flexible local scale play experiences suitable for a range of age groups and abilities, including a double swing set, a small climbing structure with slide, balance wall and stepping stones;
 - (d) new softfall - both bark mulch and rubber;
 - (e) new seating opportunities;
 - (f) repair of the existing chain mesh fence at rear of site;
 - (g) new brick paving to existing path;
 - (h) new accessible path to the playground; and
 - (i) upgrade of the reserve signage, including heritage interpretation.

Revised Concept Plan

12. In response to community feedback, particularly around the heritage significance of the reserve as the former garden of the adjacent Rothwell Lodge, significant amendments were made to the draft concept plan. A second round of community consultation was held between 28 January and 25 February 2020, which exhibited a Revised Concept Plan (refer to Attachment B).
13. The Revised Concept Plan sets the overall layout. The key principles are:
 - (a) Improve the reference to and understanding of the reserve's history and relationship to the adjacent Rothwell Lodge for all park users.
 - (b) Protect and enhance the existing landscape character including its habitat, heritage and passive recreation values.
 - (c) Renew the play offering within the reserve with consideration of the historic setting and views.
 - (d) Provide a range of seating opportunities that encourage social interaction.

- (e) Use simple, robust, high quality, materials which reflect the local neighbourhood character.
14. The revised proposal re-configures the path layout to proximate the historic garden plan. Planting and other elements are located to support the historic setting. (Refer to Attachment D for the Historic Plan and example of period garden style planting).
15. Specific proposals include:
- (a) Layout
- New path alignment interprets the original garden layout associated with Rothwell Lodge. The proposed levels are at or above existing levels to minimise any impact on existing trees. Material is decomposed granite with a brick edge.
- (b) Play
- Provide a low-key play space including a timber swing, see-saw and a range of informal natural play elements, such as timber steppers, balance beams and sandstone blocks.
- (c) Elements
- New seat locations to maximise internal and external views.
 - Relocation of bin enclosure and provision of dog poo bag dispenser.
 - New raised bird bath with sandstone boulders.
 - New habitat fence 450mm high to protect new and existing planting.
 - Removal of existing lighting within the park (two poles).
 - New hand-rails to steps.
 - Update of the existing signs to provide additional information about the site's history, including local Indigenous histories.
 - Repair of the existing fence. Retention and protection of the existing fig located on the reserve fence.
 - Removal of two existing light poles within reserve to;
 - discourage night time use,
 - reduce night light spill or 'sky glow' in accordance with Councils Lights code
 - reduce unnecessary energy consumption to help Councils energy and Greenhouse gas reduction targets, and
 - reduce unnecessary light impact on the heritage setting of Rothwell Lodge.

- (d) Planting
- Retention and protection of existing trees and habitat planting throughout reserve.
 - Provision of new opportunities for habitat planting while maintaining key views from the reserve.
 - Removal of diseased River Red Gum and replacement with equivalent species.
16. A Heritage Impact Statement has been prepared to assess the proposal and an exemption will be sought from the Heritage Council to carry out the works, as required under the NSW Heritage Act 1977. The Heritage Impact Statement notes:
- (a) The proposed playground replacement, and changes to the path material and seating arrangement in the reserve, will not affect any fabric of heritage value, and when these works are complete, they will create an improved space with enhanced amenity and visual values but which also retains an historical presence through design that reinstates the Lodge's former front garden layout.
- (b) The new playground height and scale and form will not result in the overshadowing or domination of Rothwell Lodge or disrupt any recognised heritage views or curtilage. The proposed play-space equipment will be mainly timber and sandstone in material that will have an attractive visual appearance that will not detract from the significance of the Glebe Conservation Area and surrounding streetscapes via over-shadow or bulky design.
17. A Review of Environmental Factors will be lodged for the works in accordance with the Environmental Planning Assessment Act 1979.
18. In response to the second round of community consultation, as outlined in the subject report, the following amendments will be investigated during the Detailed Design Phase:
- (a) Review location of proposed bin to avoid conflict on footpath.
- (b) Provide a drinking fountain with dog-bowl.
- (c) Review requirement for fence rectification works.
- (d) Review if a second swing would fit within the proposed play area.
- (e) Review the number of seats provided.
- (f) Ensure that the proposed play equipment minimises any impacts on views to Rothwell Lodge.
- (g) Review the provision of lighting within the reserve.
- (h) Review construction methodology to minimise construction impact on existing habitat in reserve particularly with regard to resident kookaburra.

Tree Management

19. The current condition of the existing trees within the reserve has been assessed by the City's consultant Arborist. Following this assessment it is recommended that one tree is removed due to disease, a River Red Gum. This tree will be replaced as part of the proposed upgrade.
20. The following tree management and planting is proposed as part of the upgrade works:
 - (a) Preparation of an Arboriculture Impact Assessment to inform the detailed design and ensure appropriate construction methodology.
 - (b) Retain and protect existing trees.
 - (c) Replacement tree planting to ensure a diverse age of trees present in the reserve.
 - (d) New infill groundcover planting which provides both habitat, sensory experience and reference to the heritage significance of the adjacent Rothwell Lodge Reserve.

Key Implications

Strategic Alignment - Sustainable Sydney 2030 Vision

21. Sustainable Sydney 2030 is a vision for the sustainable development of the City to 2030 and beyond. It includes 10 strategic directions to guide the future of the City, as well as 10 targets against which to measure progress. This report is aligned with the following strategic directions and objectives:
 - (a) Direction 6 - Vibrant Local Communities and Economies - this project will provide an improved open space infrastructure which meets the needs of a wide variety of user groups and provides opportunities for social interaction.
 - (b) Direction 9 - Sustainable Development, Renewal and Design - this project is part of a wider program of renewal of small parks across the city, it will provide an improved quality of open space infrastructure.

Organisational Impact

22. This upgrade will provide an improved play experience and amenity for children, their carers and other community members visiting the park. The replacement of the non-compliant assets represents a removal/mitigation of risk to the City. The assets will require ongoing maintenance.

Risks

23. Risks of not implementing the scope of these works include potential failure of play infrastructure and risk to the community. Daily inspections are carried out by the City as per standard parks and playground maintenance operations.
24. Risks of not implementing this scope of works could result in failure to meet community expectations.

25. The timing of construction will minimise the impact of construction on kookaburra breeding season (September to January). Advice will be sought from the City's Urban Ecology Coordinator and/or external experts to mitigate risks as required.
26. A minor works exemption under the Heritage Act 1977 is required to undertake the works. If the Heritage Council does not grant the exemption and a full approval process is required there is a risk of significant delay.

Social / Cultural / Community

27. Ernest Pedersen Reserve is used by a wide variety of people for passive recreation. The limited quality of play equipment currently inhibits the use of the reserve for play. This upgrade to the park and the playground will provide an improved provision of play for a wide range of ages and abilities.
28. Ernest Pedersen Reserve is located within the setting of Rothwell Lodge, a State Heritage Listed Item. The proposed upgrade aims to provide an improved reference and understanding of the reserve's history and relationship to the adjacent Rothwell Lodges for all park users.

Environmental

29. Ernest Pedersen Reserve is part of a functional corridor of 'stepping stone' habitats extending from the Glebe Foreshore Walk East to Orphan School Creek. Protection and enhancement of the existing planting through this works is in line with the Urban Ecology Strategic Action Plan.

Budget Implications

30. There are sufficient funds in the current year capital budget and future year forward estimate. Current cost estimates and financial implications are detailed in Confidential Attachment F.

Relevant Legislation

31. Local Government Act 1993 - Section 10A provides that a Council may close to the public so much of its meeting as comprises information that would, if disclosed, confer a commercial advantage on a person with whom the Council is conducting (or proposes to conduct) business.
32. Attachment F to the subject report contains confidential commercial information which, if disclosed, would confer a commercial advantage on a person with whom Council is conducting (or proposes to conduct) business.
33. Discussion of the matter in an open meeting would, on balance, be contrary to the public interest because it would compromise Council's ability to negotiate fairly and commercially to achieve the best outcome for its ratepayers.
34. Heritage Act 1977
35. Environmental Planning and Assessment Act 1979 (
36. State Environmental Planning Policy (Infrastructure) 2007;

37. Sydney Local Environmental Plan 2012;
38. Disability Discrimination Act 1992 -;
39. Companion Animals Act 1998.

Critical Dates / Time Frames

40. Current Program Dates
 - (a) Council Approval of Concept Design April 2020
 - (b) Tender Phase June 2020
 - (c) Construction Start September 2020
 - (d) Construction Duration 16 weeks

Options

41. Proceed with progression of improvement works as outlined in this subject report including relevant approvals, preparation of construction documentation, tender and construction.
42. Project does not proceed - this option is not recommended as the existing reserve has a number of associated risks and compliance issues with regard to the current playground condition.

Public Consultation

43. Consultation was undertaken in three parts. Refer to Engagement Report (Attachment C) for full details:
 - (a) Pre-Consultation - Early 2019
 - (b) Community Consultation May 2019 - June 2019
 - (c) Additional Community Consultation January 2020 - February 2020

Pre-Consultation Early 2019

44. A pre-consultation notification letter/email was issued to the following local stakeholders to notify them of the project and provide a link to a pre-consultation survey.
 - (a) Social Housing Tenants Neighbourhood Advisory Board contact;
 - (b) Glebe Society Blue Wren Group; and
 - (c) Ferry Road Bush care volunteer group.

45. A pre-consultation meeting was held on 5 February 2019 with the Glebe Society, Blue Wren Group and Ferry Road Bush Care Group to get feedback before concept designs were created. Seven people were in attendance.

Community Consultation May/June 2019

46. The concept design was on exhibition from 17 May to 14 June 2019. Forty-eight submissions were received (via Survey Monkey, email, letter, and phone). Three submissions were made on behalf of organisations and local community groups, as listed below.
- Ferry Road Bush Care Group – part of the Glebe Society Blue Wrens;
 - Glebe Society; and
 - Glebe Palmerston and Surrounds Landcare Group.
47. Overall, respondents value the quiet, reflective nature of Ernest Pedersen Reserve, which currently balances the needs of the community with the provision of seating, habitat planting and a local scale play offering. There was repeated feedback highlighting the importance of the heritage context of the reserve and the potential impact of the upgrade on the heritage context. There was also an acknowledgement that there is a need to address the safety concerns and poor state of the existing play equipment. Other comments included:
- (a) concern that there are not many children in the area and/or sufficient offerings elsewhere in Glebe;
 - (b) request that the reserve retains the existing function and scale, specifically the play elements rather than increasing the play offering;
 - (c) request for the proposed cubby to be removed due to concerns around visual impact, materials and colours, anti-social behaviour;
 - (d) request that materials of play equipment are selected that reflect the local heritage context;
 - (e) request the playground be removed entirely;
 - (f) request that there was no impact on the areas dedicated to wildlife habitat or existing trees;
 - (g) general support for proposed playground upgrade and proposed seating;
 - (h) request that no additional fences are provided; and
 - (i) request that rubber soft fall is not used in the reserve.

Additional Community Consultation January/February 2020

48. In response to community feedback, significant amendments were made to the draft concept plan. A second round of Community Consultation was held between 28 January and 25 February 2020 which exhibited a Revised Concept Plan. This Revised Concept Plan was also exhibited on the City's website.

49. Community feedback to the Revised Concept Plan was strongly in support of the amendments made to the draft concept plan. Generally, respondents indicated that the Revised Concept Plan better reflected the unique character of the reserve and balanced the need for play provision with more passive recreation activities. Respondents were very supportive of the proposed interpretation of the historic garden layout and of the revised materials for the play equipment and soft-fall.
50. Seventeen submissions were received (via Survey Monkey, email, letter, and phone). One submission was made on behalf the Glebe Society.
51. The public consultation/exhibition involved the following:
 - (a) a letter sent to 660 local residents about the concept design and inviting them to provide feedback;
 - (b) a stakeholder email sent to key stakeholders, inviting them to give feedback on the proposal;
 - (c) the consultation was included in the Sydney Your Say February 2020 e-Newsletter (4064 subscribers);
 - (d) a webpage on SydneyYourSay showed the plans for consultation from 28 January to 25 February 2020. Two hundred and twenty-three individual users viewed the page;
 - (e) two Sydney Your Say A2 panels were installed in the reserve notifying park users of the proposed works, providing contact details of the Design Manager and a web address to the SydneyYourSay page; and
 - (f) a pop-up was scheduled to take place on 8 February 2020 at the reserve. This was cancelled due to intermittent weather and rescheduled to 20 February 2020. Approximately 15 people attended this pop-up consultation.
52. In response to the second round of community consultation, as outlined in the subject report, the following amendments will be investigated during the Detailed Design Phase:
 - (a) Review location of proposed bin to avoid conflict on footpath.
 - (b) Provide a drinking fountain with dog-bowl.
 - (c) Review requirement for fence rectification works.
 - (d) Review if a second swing would fit within the proposed play area.
 - (e) Review the number of seats provided.

- (f) Ensure that the proposed play equipment minimises any impacts on views to Rothwell Lodge.
- (g) Review construction methodology to minimise construction impact on existing habitat in reserve.
- (h) Review the provision of lighting within the reserve.

AMIT CHANAN

Director City Projects and Property

Helen Rogers, Design Manager

Attachment A

Location Plan and Site Photos



View from Avon Street



View from rear of the site



View towards Rothwell Lodge

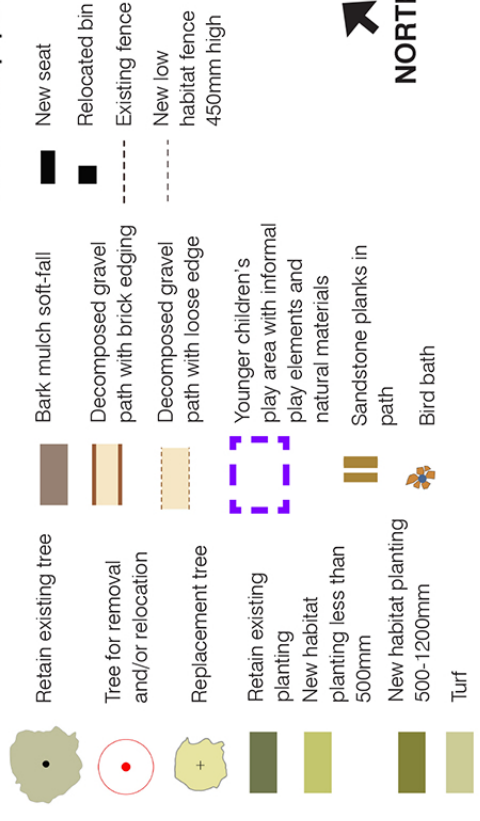


Attachment B

Revised Concept Plan



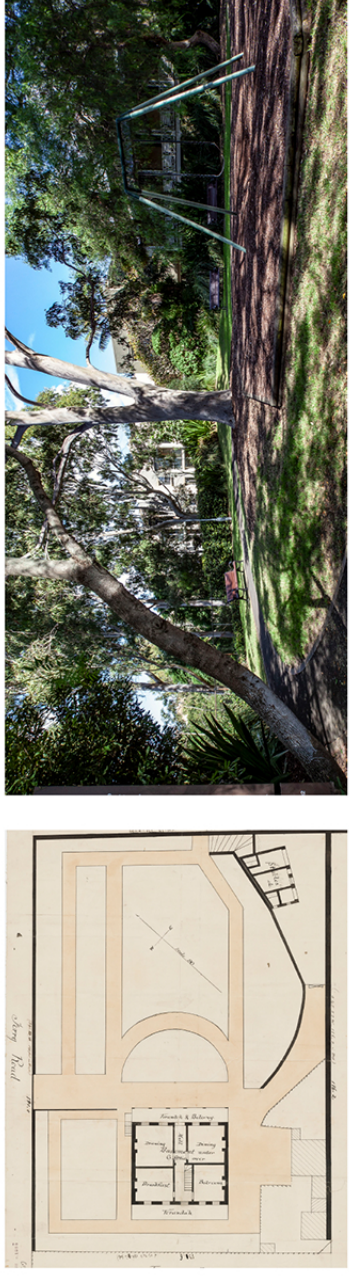
Revised concept plan



Proposed works

- 01** Retain and protect existing trees and habitat planting throughout reserve
- 02** Provide new opportunities for habitat planting while maintaining key views from the reserve. (increase from 215m2 to 418m2).
- 03** Repair existing fence. Retain and protect existing fig located on reserve fence
- 04** New habitat fence 450mm high to protect new and existing planting
- 05** New path alignment interprets the original garden layout associated with Rothwell Lodge. The proposed levels are at or above existing levels to minimise any impact on existing trees. Material is decomposed granite with brick edge.
- 06** New seat locations to maximise internal and external views
- 07** Remove diseased River Red Gum and replace with the same species
- 08** New raised bird bath with sandstone boulders
- 09** New brick paving
- 10** New hand-rails to steps
- 11** Relocated bin with dog poo bag dispenser
- 12** New timber swing
- 13** New timber see-saw
- 14** New planting within play area
- 15** New nature play steppers and balance beams- timber and reclaimed sandstone
- 16** Existing signs to be updated to provide additional information about the site's history

Proposed materials

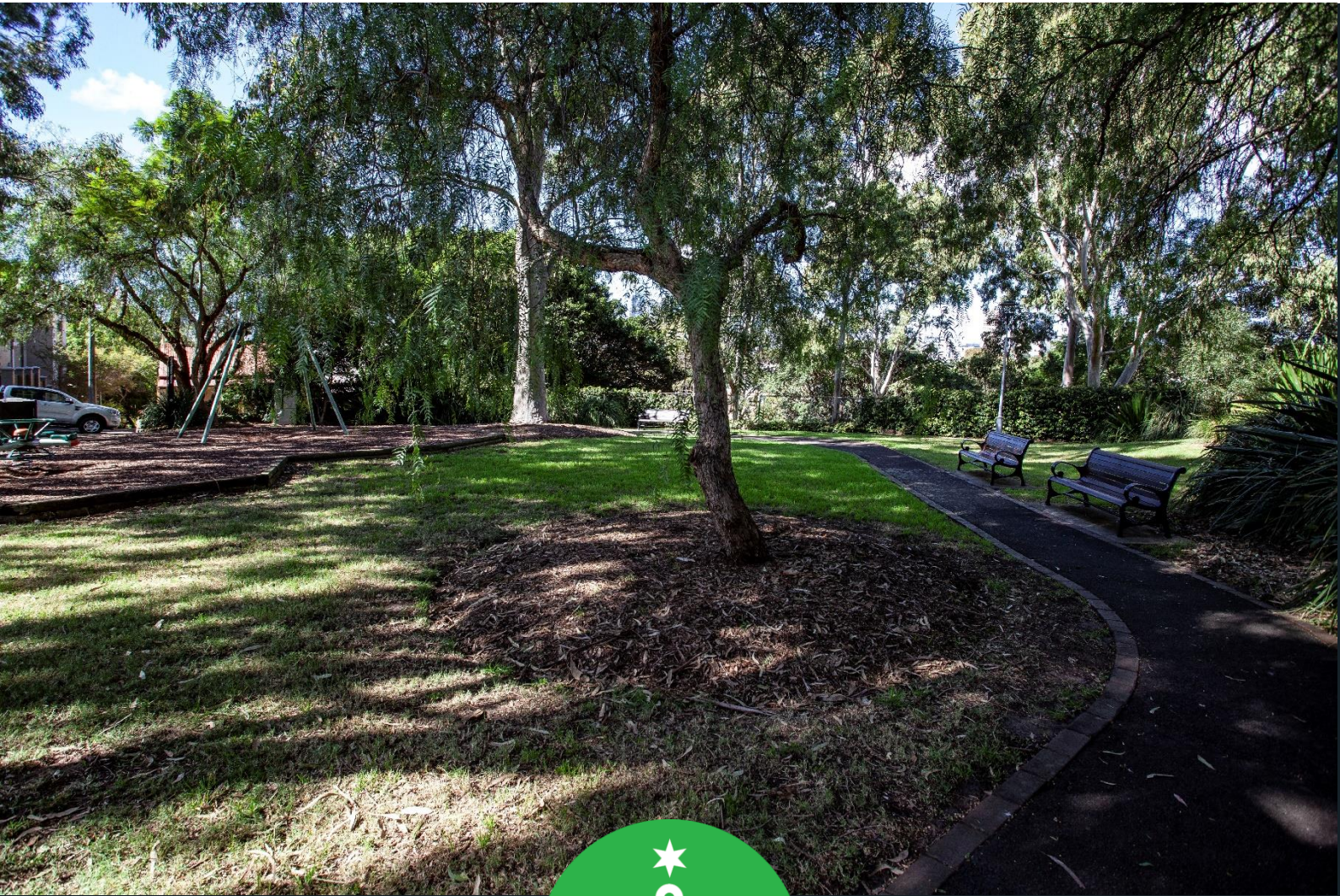


Rothwell Lodge and Garden Historic Plan
Source: State Library NSW Collections

Existing Site Condition

Attachment C

Engagement Report



Engagement report

Ernest Pedersen Reserve, Glebe

March 2020

Contents

Background	3
Engagement summary	4
Key findings	6
Engagement activities	12
Appendix	14

Background

Over the next 10 years, we're upgrading more than 60 parks across the City of Sydney area, from small pocket parks to larger local parks.

Quality green open spaces are a high priority for our residents, workers and visitors. This network of park upgrades will create better quality open spaces for everyone to enjoy, help keep our city cooler, and support biodiversity in our local areas.

Prior to finalising the designs, we are consulting the community and stakeholders on these proposed park improvements. In 2019, we consulted on our stage 14 parks, which include:

- **Ernest Pederson Reserve, Glebe**
- Fig Lane Park, Ultimo
- Kings Lane Reserve, Darlinghurst
- Clyne Reserve, Millers Point
- James Hilder Reserve, Surry Hills
- Beaconsfield Park, Beaconsfield
- Daniel Dawson Reserve, Alexandria
- Strickland Park, Chippendale
- Hollis Park, Newtown
- Palmerston Avenue Steps & Sarah Peninton Reserve, Glebe
- Cardigan Street Reserve, Glebe
- Lawrence Hargrave Reserve, Elizabeth Bay

Engagement summary

From 28 January to 25 February 2020, we asked the community for feedback on a revised concept plan to improve Ernest Pedersen Reserve in Glebe.

The revised concept plan reflects community feedback received when we exhibited a concept design from 17 May to 14 June 2019. Key themes raised in feedback included the importance of retaining the quiet and peaceful character of the space, recognising its heritage context, providing more space for wildlife, and requests to revise the playground design.

Consultation on the revised plans provided an opportunity for stakeholders and the community to review and comment on the revised design.

Consultation activities included online engagement, a letter to residents, project signage at the reserve and a community meeting in the reserve.

This report outlines the community engagement activities that took place to support the consultation and summarises the key findings from the consultation.

Purpose of the engagement

The purpose of the engagement was to:

- gather feedback from stakeholders and the community about the proposed upgrade
 - determine the level of satisfaction with the revised concept design.
-

Outcomes from the engagement

Submissions received during May/June 2019 consultation

We received a total of 48 submissions (via Survey Monkey, email, letter, and phone) during the public exhibition period. The Sydney Your Say page was visited 243 times during the consultation period.

Three submissions were made on behalf of local community groups, as listed below.

- Glebe Society
- Ferry Road Bush Care Group part of the Glebe Society Blue Wren sub-committee
- Glebe Palmerston & Surrounds Landcare Group

Submissions received during Jan/Feb 2020 consultation

We received a total of 17 submissions during the consultation period. This included submissions via an online feedback form and the Sydney Your Say email address.

The Sydney Your Say page was visited 223 times during the consultation period.

Two submissions were made on behalf of local community groups, as listed below.

- Glebe Society
- Ferry Road Bush Care Group part of the Glebe Society Blue Wren sub-committee

Key findings

Overview of key findings from May/June 2019 consultation

Respondents value the quiet, reflective nature of Ernest Pedersen Reserve. There is a group of dedicated volunteers who have worked in this reserve over many years and feel very strongly about any proposals to change this reserve.

Many respondents highlighted the importance of the heritage context of the reserve (adjacent to the State Heritage listed Rothwell Lodge) and would like the proposed design to reflect the heritage context of the area.

Provision of habitat for wildlife was also raised as a key request for respondents. Fourteen submissions requested that there was no impact on the areas dedicated to wildlife habitat or existing trees. The volunteer group have worked with the City's urban ecology coordinator, community garden coordinator and parks maintenance teams to improve and support biodiversity and habitat in the reserve. Other suggestions to support biodiversity in the reserve included nesting boxes, bird baths and native beehives.

Feedback included requests to revise the design of the playground, including creating an area with more opportunity for nature play and use of natural materials with less hard surfaces.

While some respondents asked for the reserve to be left in its current state, most acknowledged the need to address the safety concerns and poor state of the existing play equipment.

Overview of key findings from Jan/Feb 2020 consultation

The majority of community feedback supported the amendments made to the draft concept plan. Generally respondents indicated that the revised concept plan better reflected the unique character of the reserve and balanced the need for play provision with more passive recreation activities. Specifically respondents were supportive of the proposed interpretation of the historic garden layout and of the revised materials for the play equipment and soft-fall.

A limited number of respondents considered the revised plans limited the play offering.

In response to the second round of community consultation the following amendments will be investigated during the detailed design phase:

- Review location of proposed bin to avoid conflict on footpath
- Provide a drinking fountain with dog-bowl
- Review requirement for fence rectification works
- Review if a second swing would fit within the proposed play area
- Review the number of seats provided
- Ensure that the proposed play equipment minimises any impacts on views to Rothwell Lodge
- Review construction methodology to minimise construction impact on existing habitat in reserve

Subjects/topics raised in submissions

Several subjects/topics were raised in the feedback received. These were presented as concerns, suggestions and/or requests and are summarised below.

General		
Project Scope/Timing/Budget	Total	City of Sydney Response
Supportive comments about the revised concept plan e.g.: “I think the new plans are really great, really commend the council for responding to community feedback and think the new park will be a fabulous resource for the community” “I like the appreciation for heritage and nature in this upgrade!” <ul style="list-style-type: none"> • “Recognises the unique heritage value and its principal use as a passive park” • “More in keeping with the neighbourhood than earlier plans” • “Pleased with the enhancement of historical significance and wildlife” • “Design highlights and respects the adjacent heritage property” • 	10	Noted.
Layout	Total	City of Sydney Response
Request to remove secondary path on Ferry Road side of the play equipment.	1	This path forms part of the historic garden layout and will form an edge to the play area.
Request to swap position of swing (12) and see-saw (13) so swing doesn't impact the vista of Rothwell Lodge from Ferry Rd.	1	The swing and see-saw have been positioned to minimise impact on views to Rothwell Lodge. We will review the location in the detailed design phase to ensure that any impacts are minimised.
Concern new location of the bin may make the footpath crowded. Suggestion to relocate bin near the exit on Avon Street.	2	The City will review the bin location in the detailed design phase to ensure that clear pedestrian access is maintained.
Request to link to the green space beyond the park (William Carlton Gardens) and improve connection and wayfinding to light rail station.	2	Works beyond Ernest Pedersen Reserve are not part of the scope of this park upgrade. Requests have been passed to the City's parks team for consideration.
Play space	Total	City of Sydney Response
Concern play area doesn't align with local demographics (used mostly by adults and	1	The City is committed to providing local scale play opportunities within 500m of

Engagement report

<p>teenagers). Request young children's play area is further reduced in size including removal of seesaw.</p>		<p>all residents. Ernest Pedersen Reserve forms part of this provision.</p> <p>After reviewing the local play offerings and demographics, the City continues to support the inclusion of a small low-key play offering in Ernest Pedersen Reserve.</p>
<p>Concern condition of the reserve is poor with not much to do.</p> <p>Concern that the updated play area is too limited and does not meet the needs of residents with small outdoor spaces.</p>	1	<p>The proposed upgrade is a result of the current asset condition of Ernest Pedersen Reserve. Annual audits are carried out on all parks. Upgrades are programmed to ensure all city parks are in an acceptable condition.</p> <p>This upgrade will provide an improved reserve for all community members and aims to balance the needs of the range of existing and potential visitors who use the reserve for passive recreation, quiet reflection as a place for dogs, and for play.</p>
<p>Preference for a more substantial playground.</p> <p>Local families would like to see a decent playground in the area.</p> <p>Disappointing that a boring playground is replaced with a similarly basic, boring one. Only one swing and see-saw. Stepping stones and balance wall don't count as we already balance along the existing wall.</p>	1	<p>The revised concept design aims to address the broad range of feedback raised during the original consultation.</p> <p>The revised design provides for a range of user groups and responds to the feedback we received.</p> <p>Whilst a play offering is considered as an important provision in the reserve, maintaining the unique character of the reserve as a place passive recreation and quiet reflection has also been prioritised.</p> <p>The provision of a swing, see-saw and the natural play elements such as steppers, balance beams etc. will provide a range of play experiences for children.</p> <p>It is considered that the upgraded landscape setting and new play elements installed will provide children with a variety of opportunities for more self-directed, flexible play and opportunities to engage with the unique features of the reserve.</p>
<p>Request to install at least two swings.</p>	2	<p>We will review any opportunity for this in the detailed design phase.</p>
<p>Disappointed cubby house has been removed from revised design.</p>	1	<p>The cubby-house was removed in response to strong opposition during the first round of community consultation.</p>

Engagement report

		A cubby structure is provided in Kirsova 3 on Wigram Lane and at Sarah Peninton Reserve.
Habitat and planting	Total	City of Sydney Response
Hope native plants are included. Local wildlife in the reserve brings neighbourhood together. Please support this aspect over generic man-made play equipment for kids that can be found in other parks.	1	New native planting which provides habitat for local wildlife will be included in the reserve upgrade.
Request for a native bee hive and nesting box for wildlife	1	Request has been referred to the City's ecologist. Priority sites for nesting boxes have been identified across the local area by a consultant ecologist. Based on this work, Ernest Pedersen Reserve will not have a nest box installed at this stage. The City is currently developing guidelines with regard to the installation of native bee hives in open spaces.
Recommend the Red River Gum (07) be replaced with a different, drought resistant species that won't be subject to infection. Will end up with the same problem planting the same species. Replace with something reflective of 19th century trees in the area such as Cooks Pine - Araucaria columnaris	1 1	We will review species selection during the detailed design phase.
Recommended that shrubs are planted along the new habitat fence to discourage dogs and people from entering garden areas.	1	We will review in the detailed design phase.
Planting scheme should reflect and further bolster the history of the site.	1	The proposed planting within the reserve will provide a mix of plant species which reflect the form, colours and textures of a late Victorian period garden. The species will generally be native and also provide an increase in habitat across the reserve.
A few exotics have their place, and there are already quite a few in the park. Some of these have been there for decades. Others were planted by residents. Native plantings also planted by resident. Retain these plantings.	1	Noted.
"More wildlife habitat with larger garden beds and a new bird bath" - Can we include local indigenous plant names as well as botanical terms on signage, also for the birds we hope to attract?	1	The inclusion of ecological information on the reserve signage is not currently part of the signage scope. We will investigate further during the detailed design phase.

Fitness equipment	Total	City of Sydney Response
<p>Fitness equipment would be great for everyone, including supervisors/carers to get exercise and stretch. Something simple to attach bands will do.</p>	<p>1</p>	<p>The City has a Park Fitness Equipment Plan which defines the provision of fitness equipment across the local area.</p> <p>https://www.cityofsydney.nsw.gov.au/_data/assets/pdf_file/0008/257228/Park-Fitness-Equipment-Plan-v3.pdf</p> <p>Ernest Pedersen Reserve is not part of this provision. The closest fitness equipment is at Bicentennial Park and Wentworth Park.</p>
Materials	Total	City of Sydney Response
<p>Path and surface (05) should be compatible and safe for toddlers to elderly; from beginners to intermediate wanting to learn to roller skate, skateboard, scooter etc. and for toddlers to ride a push along. Could be great for learners where it's quiet and outdoors.</p>	<p>1</p>	<p>The proposed material will meet minimum standards for accessibility. The scale and character of the reserve is such that the main existing use is for quiet, passive recreation. It is anticipated that whilst the paths may be used for small scooters etc. there are other parks within the local area which will provide more appropriate path surfaces for these types of activities.</p>
<p>Could be interesting to use re-cycled plastic bottles for play equipment and seat. Used in other councils and countries quite successfully.</p>	<p>1</p>	<p>This may be investigated as part of future projects.</p> <p>As part of this upgrade we will be using standard park furniture and generally natural materials such as timber and stone.</p>
Historical information	Total	City of Sydney Response
<p>Can some history about First Nations Peoples in the new history pieces be included? Updated signs: include references to the indigenous people in the area and their history</p>	<p>2</p>	<p>The updated signs will include a welcome, <i>bujari gamarruwa</i>, which means 'good day' in the language of the Gadigal.</p> <p>Visit cityofsydney.nsw.gov.au for more information on the work the City is doing to recognise and celebrate the First Peoples of Australia in the public domain.</p>
Seating	Total	City of Sydney Response
<p>Another seat along the southern pathway could be useful as they're often used at lunchtime</p>	<p>1</p>	<p>The City will review seating numbers during the detailed design phase. This proposal aims to maintain the existing provision of formal seats as well as provide a range of informal seats such as sandstone logs which can function as both play elements and seats.</p>
<p>Appears to be insufficient seats / benches.</p>	<p>1</p>	<p>The City will review seating numbers during the detailed design phase. This proposal aims to maintain the existing provision of formal seats as well as provide a range of informal seats such as sandstone logs which can function as both play elements and seats.</p>

Engagement report

The new seating - seats with a back, not benches. More comfortable.	1	Benches and seats with backs will be provided in the proposed upgrade.
Dogs	Total	City of Sydney Response
Add a dog waste bag dispenser.	1	The re-located bin enclosure will include a dog-waste dispenser.
Dog owners have used it as a toilet area and do not pick up. Additional signs needed to improve behaviour.	1	Regulatory signage will be reviewed as part of the signage upgrade in the reserve.
Water fountain	Total	City of Sydney Response
Request for a drinking (council) fountain bubbler	2	The City will investigate the provision of a drinking fountain in the detailed design phase.
Other	Total	City of Sydney Response
The small "look out" on the southern border adjacent the chain link fence (03) should be preserved, not converted to a garden.	3	The City will review how this area is treated during the detailed design phase to ensure that access to this view is maintained.
Concerned that all grass area will be lost for free play	1	The proposal aims to balance the provision of open grass, habitat planting and play to meet the needs of all community members.

Engagement activities

Overview of engagement undertaken in 2019

A Sydney Your Say webpage was created, along with an online survey. 660 letters were sent to residents in the area and key stakeholders were contacted.

Two workshops were undertaken with children from Forest Lodge Public School and Glebe Library storytime in June 2019.

Before consultation began, the project team met onsite on 5 February 2019 with members of the Glebe Society Blue Wrens and Bushland Volunteer groups.

The project team attended a Glebe Society meeting to update them on 8 August 2019.

Overview of engagement undertaken in 2020

1. Sydney Your Say webpage

A Sydney Your Say webpage, <https://www.cityofsydney.nsw.gov.au/council/your-say/park-playground-upgrades/revised-plans-improve-ernest-pedersen-reserve-glebe> was created. The page included an electronic copy of the revised concept design, survey and other key information about the consultation.

2. Online feedback form via Survey Monkey

The community and stakeholders were able to give feedback using an online feedback form. A link to the feedback form was provided on the Sydney Your Say website.

3. Sydney Your Say e-News

The consultation was included in the Sydney Your Say February 2020 e-Newsletter (4,070 subscribers).

4. Consultation letter

A letter was posted to residents, inviting them to give feedback on the proposal. 660 letters were distributed.

5. Notification email

An email was sent to key stakeholders, including the Glebe Society Blue Wren Group, Ferry Road Bush Care Group, Glebe Point Residents Group, Glebe Community Action Group, Glebe Palmerston and Surrounds Landcare Group, inviting them to give feedback on the proposal.

6. On site signage

Two notice boards were installed at Ernest Pedersen Reserve, inviting people to give feedback on the proposal.

7. Community meeting

A pop-up information session was cancelled due to wet weather on 8 February 2020. A meeting onsite was rescheduled for 20 February. Approximately 15 people attended this meeting and feedback is incorporated in the table above.

Appendix

Appendix A: 2019 concept design



Appendix B: 2020 concept design (revised)



Appendix C: photos from Glebe Library storytime session on 11 June 2019



Revised plans to improve Ernest Pedersen Reserve, Glebe



Under review

Contributions to this consultation are closed for evaluation and review. The project team will report back on key outcomes.

We've updated our plans to upgrade the park and playground at Ernest Pedersen Reserve and invite your feedback on the design.

The updated plans reflect community feedback in 2019 on the importance of retaining the quiet and peaceful character of the space, recognising its heritage context and providing more space for wildlife. We've also revised the proposed playground elements and design.

The revised proposal includes:

- a path layout that reflects the original garden of the state heritage-listed Rothwell Lodge and Factory
- updated signs with more historical information
- more wildlife habitat with larger garden beds and a new bird bath
- discreet low fencing for new plants to establish.

The proposed play area will be more informal in character and incorporate natural materials and nature play into the design. The footprint of this area will reduce by around 20% compared to its current size.

Play elements for younger children will be installed away from main views to the nearby heritage building and include:

Key dates

Public consultation period
28 January to 25 February 2020

Contacts

Helen Rogers
Design Manager

02 9265 9333
sydneyyoursay@cityofsydney.nsw.gov.au

Related projects

- [Improving Ernest Pedersen](#)



[Revised plans to improve Ernest Pedersen Reserve, Glebe](#)

The updated plans reflect community feedback in 2019 on the importance of retaining the quiet character of the space, recognising its heritage and providing more space for wildlife. We invite your feedback on the revised design.

[Read more](#)

Appendix D: Jan/Feb 2020 consultation letter



City of Sydney
Town Hall House
456 Kent Street
Sydney NSW 2000

+61 2 9265 9333
council@cityofsydney.nsw.gov.au
GPO Box 1591 Sydney NSW 2001
cityofsydney.nsw.gov.au

28 January 2020

Revised plans to improve Ernest Pedersen Reserve, Glebe

We have updated our plans to upgrade the park and playground at Ernest Pedersen Reserve and invite your feedback on the design.

The updated plans reflect community feedback in 2019 on the importance of retaining the quiet and peaceful character of the space, recognising its heritage context and providing more space for wildlife. We have also revised the proposed playground elements and design.

The revised proposal for Ernest Pedersen Reserve includes:

- a path layout that reflects the original garden of the State heritage-listed Rothwell Lodge and Factory
- updated signs with more historical information
- more wildlife habitat with larger garden beds and a new birdbath
- ~~discreet~~ low fencing for new plants to establish.

The proposed play area will be more informal in character and incorporate natural materials and nature play into the design. The footprint of this area will reduce by around 20% compared to its current size.

Play elements for younger children will be installed away from main views to the nearby heritage building and include:

- informal nature play, including sandstone balance wall, stepping stones and logs
- a timber single swing
- a timber see-saw
- ~~bark mulch~~ ~~sofffall~~.

We will retain and protect existing plants and trees. Due to the effects of drought and disease, our arborist has indicated one *Eucalyptus tereticornis* (Forest Red Gum) tree will need to be removed. It will be replaced with a tree of the same species (item 7 on the plan). So we can keep the remaining trees, we will avoid altering the levels in the park where possible. We will follow arborist recommendations in the detailed designs and during construction.

We will schedule construction outside of kookaburra breeding season and follow all recommendations to protect wildlife.

The revised design is available to view online at cityofsydney.nsw.gov.au/park-playground-upgrades. Feedback can be provided until 5pm on Tuesday 25 February 2020.

You can also view the revised design and talk to us at Ernest Pedersen Reserve on Saturday 8 February from 9am to 11am.

If you're unable to look at the plans online, you can contact Rhianna McAlary on 02 9265 9333 or email sydneyyoursay@cityofsydney.nsw.gov.au to request a printed copy. A printed copy is also available at Glebe Library, 186 Glebe Point Road.

Next steps

Following community consultation, the design will be presented to Council, along with any feedback received. You are welcome to attend Council Committee to provide any additional comments. You can find guidelines for speakers at Council Committees on the City's website cityofsydney.nsw.gov.au/council/about-council

We will notify everyone who has made a submission ahead of the Committee meeting and will keep you updated on times for construction.

For more information about the project, please contact Helen Rogers, Design Manager on 02 9265 9333 or email sydneyyoursay@cityofsydney.nsw.gov.au

Yours sincerely,

Belinda Graham
Delivery Manager

CITY OF SYDNEY 

Have your say

Improving Ernest Pedersen Reserve

In mid-2019 we consulted on plans to upgrade the park and playground at Ernest Pedersen Reserve. Following feedback from the community, we have updated the plans and invite your feedback on the revised concept design.

Over the next 10 years, we're upgrading more than 60 parks across the City of Sydney, from small pocket parks to larger local parks.

Quality green open spaces are a high priority for our residents, workers and visitors. This network of park upgrades will create better quality open spaces for everyone to enjoy, help keep our city cooler, and support biodiversity in our local areas.

You can view the revised design and give feedback at cityofsydney.nsw.gov.au/park-playground-upgrades

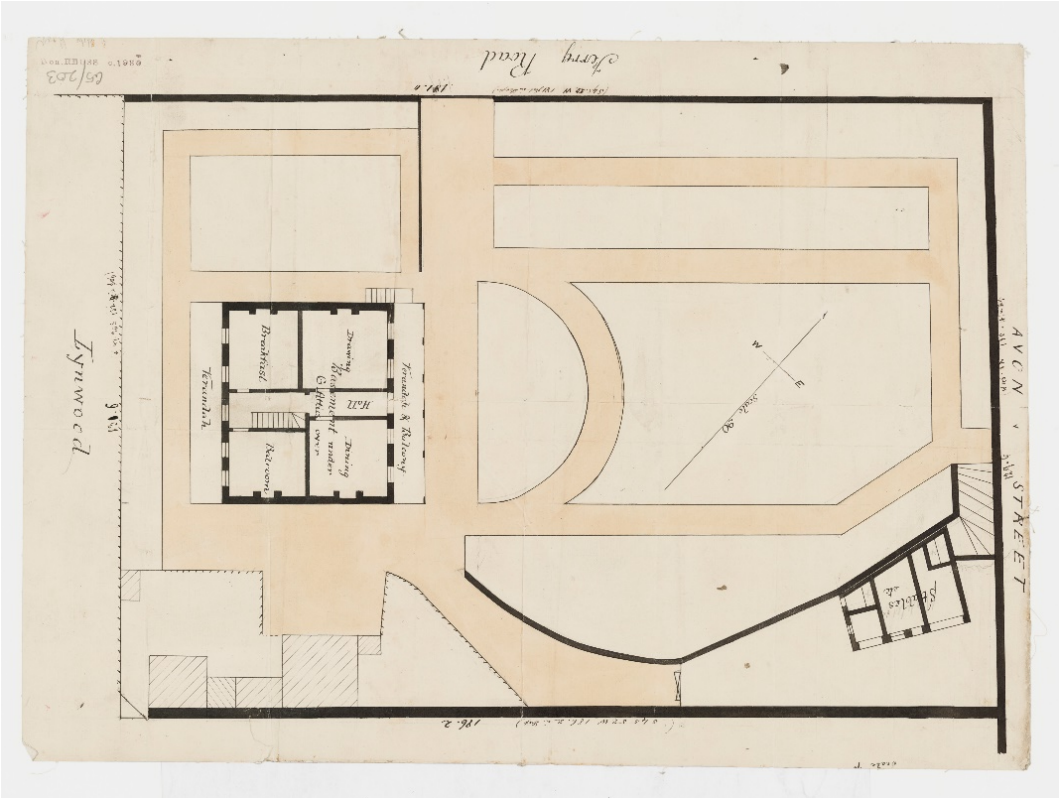
Consultation closes at **5pm on Tuesday 25 February 2020.**

You are invited to speak with project staff about the revised design at Ernest Pedersen Reserve on **Saturday 8 February from 9 to 11am.**

For more information about the project, please contact Helen Rogers, Design Manager on **02 9265 9333** or email sydneyyoursay@cityofsydney.nsw.gov.au

Attachment D

Historic Plan and Garden Image



Sketch Plan showing original garden layout of Rothwell Lodge which now forms Ernest Pedersen Reserve (Source: State Library, NSW)



Photo of the perennial border outside Garden House in the Melbourne Botanic Garden (Source: Diggers Garden Club)

Attachment E

Consultation Concept Plan



- Key**
- Retain existing trees
 - New trees
 - Retain existing planting
 - New habitat planting
 - New turf
 - New rubber soft fall
 - New mulch soft fall
 - New sandstone edge
 - New brick path
 - New feature brick paving
 - Retain existing walls
 - Bench seats
 - New platform seat
 - Retain existing fence
 - Repair fence
 - New hoop garden fence
 - New fence and gate
 - New bin
 - New sandstone balance wall and steppers

Proposed works

- 01** Retain and protect existing trees and habitat planting throughout reserve
- 02** Provide new opportunities for habitat planting
- 03** New double swing set with strap and bucket seat, suitable for children aged 0-12
- 04** New play structure with slide and cubby suitable for children aged 1-8
- 05** New nature play including balance wall, steppers and sensory planting
- 06** Repair existing fence at rear of site
- 07** Retain existing bench seats
- 08** New bench seats
- 09** New brick paving to existing path
- 10** New accessible path to the playground
- 11** New fence and gate 900mm high
- 12** New hooped garden fence within garden bed
- 13** New sandstone edge to lawn

Ernest Pedersen Reserve Upgrade



Document is Restricted